

*New Jersey Semi-Conductor Products, Inc.*

20 STERN AVE.  
 SPRINGFIELD, NEW JERSEY 07081  
 U.S.A.

TELEPHONE: (201) 376-29  
 (212) 227-60  
 FAX: (201) 376-89

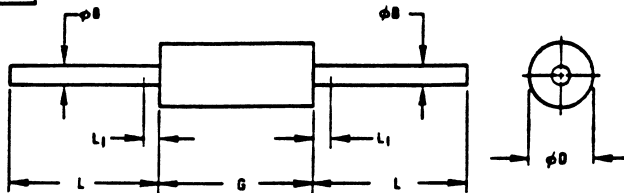
PARAMETERS

1N3470  
 GERMANIUM DIODE

Description: Germanium Diode

Manufacturer..... many  
 Mil/High-Rel? (Y/N).....  
 I(out) (If AVG) Max..... 85m  
 VRRM..... 35  
 1-Cycle Surge Current (A).....  
 Vf Max..... 1.0  
 @If (test)..... 600m  
 Ir @25xC..... 30u  
 @Volts (test) (V)..... 20  
 Ir @ Diff. Temp (A)..... 100u  
 @Temp (test) (xC)..... 25  
 Oper. Temp (xC) Max..... 90  
 Pkg Style..... DO-7  
 Surface Mounted (Y/N)..... N

DO7



MILLIMETER DIMENSIONS ARE DERIVED FROM ORIGINAL INCH DIMENSIONS

SYMBOL	INCHES		MILLIMETERS		NOTES
	MIN.	MAX.	MIN.	MAX.	
B	.018	.022	0.458	0.558	-
D	.085	.107	2.16	2.71	1
G	.230	.300	5.85	7.62	1
L	1.000	-	25.40	-	-
L1	-	.050	-	1.27	2

NOTES:

1. PACKAGE CONTOUR OPTIONAL WITHIN CYLINDER OF DIAMETER  $\phi D$  AND LENGTH G. SLUGS, IF ANY, SHALL BE INCLUDED WITHIN THIS CYLINDER BUT SHALL NOT BE SUBJECT TO THE MINIMUM LIMIT OF  $\phi D$ .
2. LEAD DIAMETER NOT CONTROLLED IN THIS ZONE TO ALLOW FOR FLASH, LEAD FINISH BUILD-UP, AND MINOR IRREGULARITIES OTHER THAN SLUGS.



Quality Semi-Conductors